

Can be used  
for pressure  
differentials  
up to approx.  
1 bar



## EXR DOSING VALVES



A rotary and dosing valve that is suitable for transporting both powder and granular products. The ExR series is equipped with a large inlet for an ideal filling process and low resistance so perfect for dosing. It can also be used for pneumatic transport. Its many benefits include a direct drive and an easily removable rotor, resulting in a valve that also enjoys convenient maintenance.

### PROPERTIES

- External maintenance-free ball bearings
- Gland packings
- Can be used with differential pressures up to approx. 1 bar
- Cutting inlet
- Minimal air leakage
- Equipped with direct-drive gearmotor
- Standard equipped with venting
- Standard cast iron house and cover
- High filling ratio
- Flanges in accordance with UNI PN10 / DIN 2576
- Material compatibility for food contact in compliance with EC Regulation n° 1935/2004 available on request
- ATEX version CAT II 1/\*\*D Ex h IIC T135°C possible (\*\*2 of 3) for use in ATEX zone 21 or 22

### TECHNICAL INFORMATION

Type	150	200	250	300
Volume capacity (litres per revolution at a fill of 100%)	3	11	20	37
Number of rotor blades	8	8	8	8
Max. differential pressure	1 bar			
Operating temperature	-15 up to 60 °C (80 °C for metal blades)			

### ROTOR VARIANTS

Rotor types				
C	C3MM	E	E_H/5MM	E_V
Straight blades with chamfered tips on all sides	Straight blades with 3mm chamfered tips on all sides	Straight blades with exchangeable rotor tips on all sides	Straight blades with 5mm hardox rotor tips on all sides	Straight blades with Vulkollan (PU) removable blades

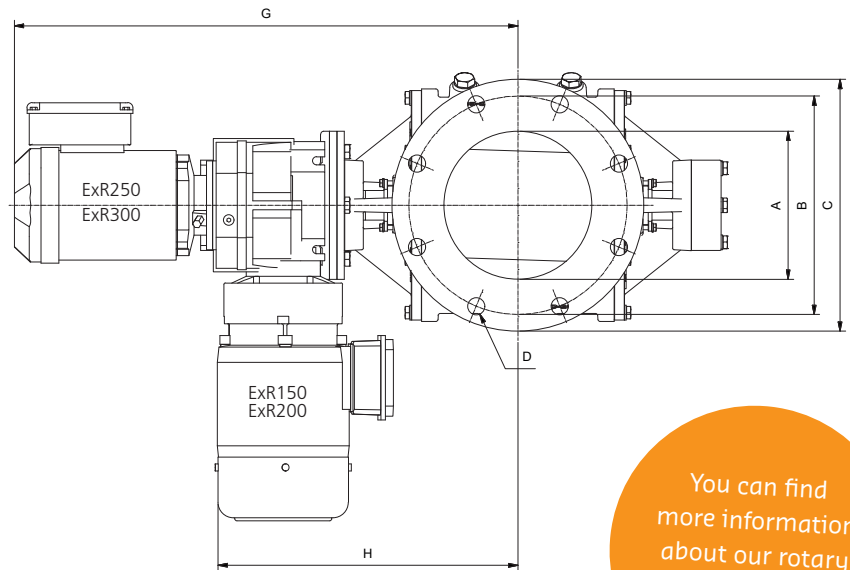
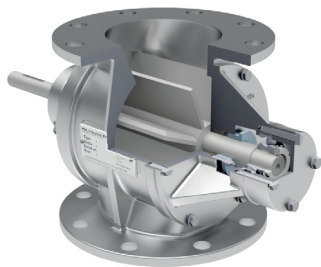
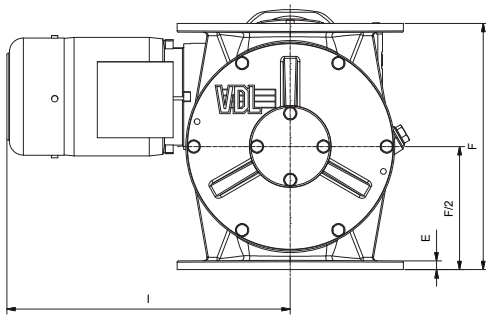


### EXR-EX VERSION: FLAME PROOF AND PRESSURE SURGE-RESISTANT

Our ExR dosing valves also come in EX certified versions, for use as explosion barrier. The versions with Vulkollan (PU) rotorblades are flame-resistant and explosion proof up to 1.7 bar and the versions with steel or stainless steel rotor blades up to 2.5 bar.

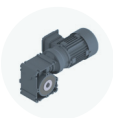
## DIMENSIONS, SPEED AND WEIGHT

Type	Sizes (mm)									Speed (rpm)	Total weight (kg)
	Ø A	Ø B	Ø C	D	E	F	G	H	I		
ExR150	150	240	285	8 x Ø23	13	260	-	330	355	max 32	60
ExR200	200	295	340	8 x Ø23	13	370	-	400	525	max 32	120
ExR250	250	350	395	12 x Ø23	17	425	770	-	-	max 32	200
ExR300	300	400	445	12 x Ø23	20	500	840	-	-	max 32	240



You can find more information about our rotary valves in our catalogue

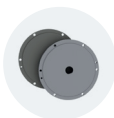
## OPTIONS AND ACCESSORIES



Special drives



Different colours



Hard chrome plating



Air purge



Injector



Chemical nickel plating



Speed monitoring



Seals & flanges



Product scraper

### More options:

- Rotor polishing
- Teflon coatings
- Wear-resistant coatings
- Special rotor blades