

**Time saving
quick
disassembly**



SMD ROTARY VALVES



Drop-through and dosing valve suitable for transporting both powdered and granular products. This valve is specially designed for the pharmaceutical, chemical and food industries (EHEDG compliant). The SMD series features a large inlet for optimal filling and low resistance, ideal for dosing. Also very suitable for pneumatic transport. Thanks to the different rotor designs, a wide range of products can be handled well. The direct drive and a glandpacking for the shaft seal result in a maintenance-friendly and reliable valve. The SMD is equipped with a quick disassembly system with extraction bars, a completely removable rotor and internal surfaces polished and connected to meet the highest cleaning standards.



PROPERTIES

- Standard with external supports with outside ball bearings even for high temperature (max. 220 °C)
- Gland packings
- Flanges in accordance to UNI PN10 / DIN2576
- Cutting inlet
- Minimal air leakage
- Equipped with direct-drive gearmotor
- Standard equipped with venting
- Body and covers available in cast iron or stainless steel
- High filling ratio
- Easy Clean version with side guides, captive screws, and complete removal of the rotor
- Material compatibility for food contact in compliance with EC Regulation n° 1935/2004 available on request
- ATEX version CAT II 1/**D Ex h IIC T135°C possible (**2 of 3) for use in ATEX zone 21 or 22

TECHNICAL INFORMATION

Type	150	200	250	300
Volume capacity (litres per revolution at a fill of 100%)	3	11	20	37
Number of rotor blades	8	8	8	8
Max. differential pressure	1 bar			
Operating temperature	-15 up to 220 °C			

ROTOR VARIANTS

Rotor types	
C	E
	
Stainless steel fixed blades tapered all around	Stainless steel / stainless steel removable tips



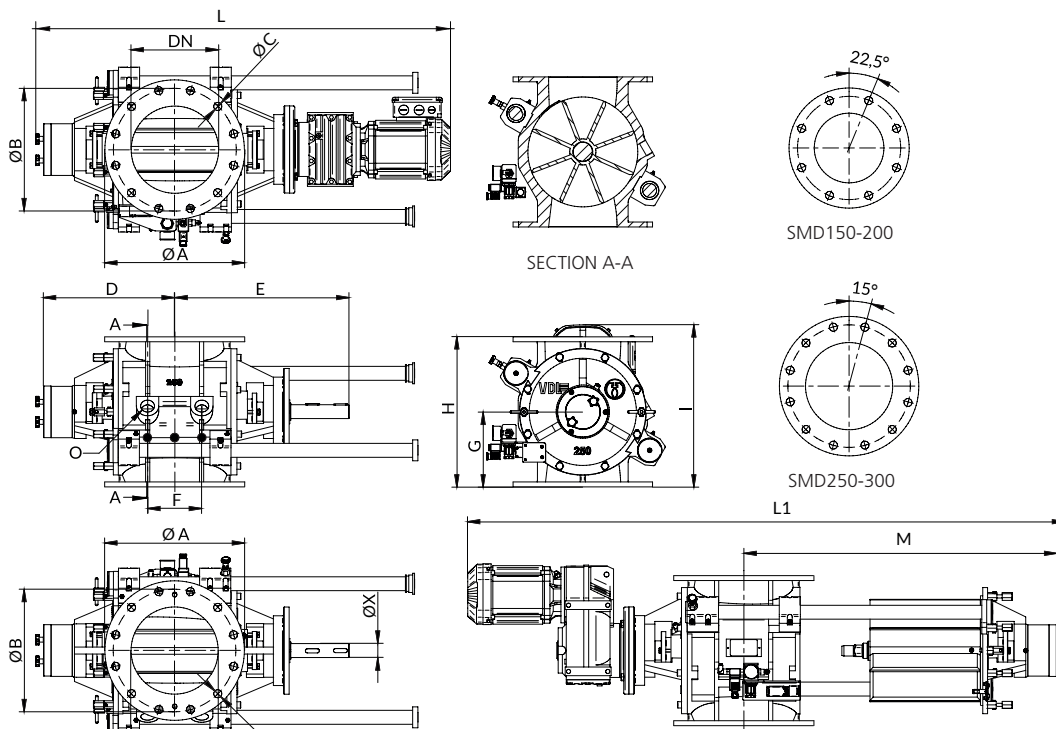
This valve is not available as flameproof version. Please note our RS, ExR, HT and HT-S rotary valves for flameproof versions.

DIMENSIONS, SPEED AND WEIGHT

Measurements (mm)									
Type	DN	ØA	ØB	ØC	No. holes	D	E*	ØX	F
SMD150	150	285	240	23	8	256	375	35	-
SMD200	200	340	295	23	8	322	445	40	132
SMD250	250	395	350	23	12	374,5	509	40	155
SMD300	300	445	400	23	12	427	593,5	50	190

Measurements (mm)									RPM	Gross weight (kg)**
Type	O	No. holes	G	H	I*	L*	L1*	M		
SMD150	3/4" gas	1	130	260	336	936	1240	574	max 32	110
SMD200	1" gas	2	185	370	411	1063	1490	749	max 32	195
SMD250	1-1/4" gas	2	215	430	464	1181	1700	892,5	max 32	255
SMD300	1-1/4" gas	2	250	500	555	1360	1950	1021	max 32	365

* These dimensions may vary depending on gearmotor type



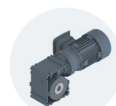
EASY CLEAN AND QUICK DISASSEMBLY



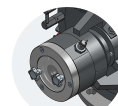
This SMD Easy Clean rotary valve has a high level of efficiency in terms of cleaning, as the rotor can be easily removed and replaced without tools.

The valve can be provided with stainless steel housing and rotor and is extremely suitable for foodstuffs and other sensitive products.

OPTIONS AND ACCESSORIES



Special drives



Speed monitoring



SS product scrapers

More options:

- Nickel plating
- Tungsten carbide coating
- Teflon coating
- Polishing (SS only)



Air purge



Injectors