

**New in
our range**



UPH ROTARY VALVES



Drop-through and dosing valve suitable for transporting both powdered and granular products. This valve is specially designed for the pharmaceutical, chemical and food industries (EHEDG compliant). The UPH series features a large inlet for optimal filling and low resistance, ideal for dosing. Also very suitable for pneumatic transport. Thanks to the different rotor designs, a wide range of products can be handled well. The direct drive and a glandpacking for the shaft seal result in a maintenance-friendly and reliable valve.



PROPERTIES

- Standard with external supports with outside ball bearings even for high temperature (max. 220 °C)
- Gland packings
- Flanges in accordance to UNI PN10 / DIN2576
- Cutting inlet
- Minimal air leakage
- Equipped with direct-drive gearmotor
- Standard equipped with venting
- Body and covers available in cast iron or stainless steel
- High filling ratio
- Material compatibility for food contact in compliance with EC Regulation n° 1935/2004 available on request
- ATEX version CAT II 1/**D Ex h IIIC T135°C possible (**2 of 3) for use in ATEX zone 21 or 22

TECHNICAL INFORMATION

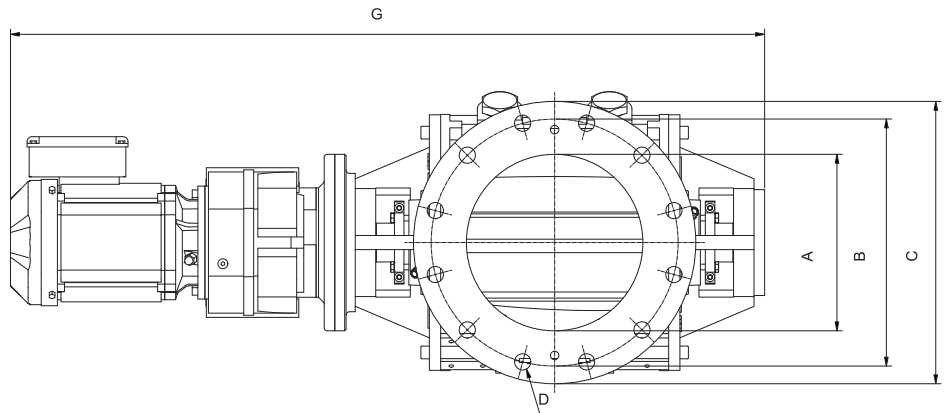
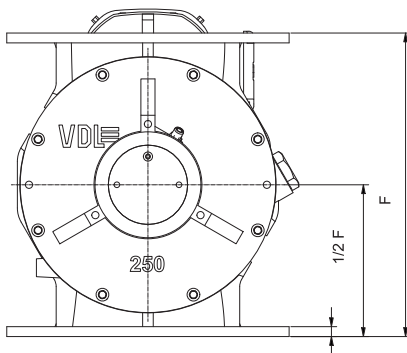
Type	150	200	250	300
Volume capacity (litres per revolution at a fill of 100%)	3	11	20	37
Number of rotor blades	8	8	8	8
Max. differential pressure	1 bar			
Operating temperature	-15 up to 220 °C			

ROTOR VARIANTS

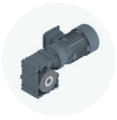
Rotor types	
C	E
	
Stainless steel fixed blades tapered all around	Stainless steel / stainless steel removable tips

DIMENSIONS, SPEED AND WEIGHT

Type	Sizes (mm)						RPM	Total weight (kg)
	Ø A	Ø B	Ø C	D	F	G		
UPH150	150	240	285	8 x Ø23	260	840	max 32	95
UPH200	200	295	340	8 x Ø23	370	956	max 32	165
UPH250	250	350	395	12 x Ø23	430	1069	max 32	215
UPH300	300	400	445	12 x Ø23	500	1242	max 32	310



OPTIONS AND ACCESSORIES



Special drives



Speed monitoring



Seals & flanges



Stainless steel product scrapers



Air purge



Injectors

More options:

- Nickel plating
- Tungsten carbide coating
- Teflon coating
- Polishing (SS only)