

# UPR ROTARY VALVES



The UPR rotary valve has been designed to handle plastic flakes and granulates under heavy circumstances. The special shaped inlet and outlet prevents jamming of the product, and the specific external bearing construction makes handling and maintenance very efficient. Max. differential pressure: 1 bar




## CHARACTERISTICS

- Standard color RAL 9001
- Many rotor varieties
- Indirect or direct drive
- Closed rotor
- Standard with cast iron housing and covers
- Standard with external supports with outside ball bearings even for high temperature (max. 220 °C)
- Low air-loss
- Fitted with UNI PN10 / DIN 2576 flanges
- ATEX version CAT II 1/\*\*D Ex h IIC T135°C possible (\*\*2 of 3) for use in ATEX zone 21 or 22

## TECHNICAL INFORMATION

Type	200	250	300
Volume capacity (liters/rev. at 100% filling ratio)	8	18	44
Rotorblades	10	10	10
Max. differential pressure	1 bar		
Standard working temperature (heat resistant types till 220 °C)	-15 up to 220 °C		

## ROTOR VARIETIES

Rotor types closed on sides		
A	C	D*
		
Straight blades standard	Straight blades, with chamfered tips on top	Straight blades with exchangeable rotortips

\* Exchangeable blades in hardened c72 steel, stainless steel or Vulkollan

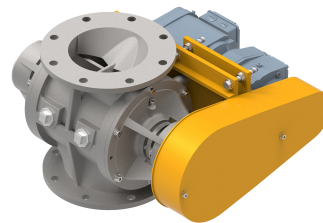
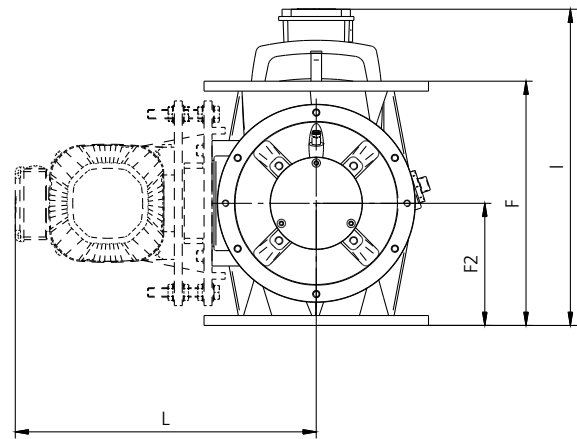
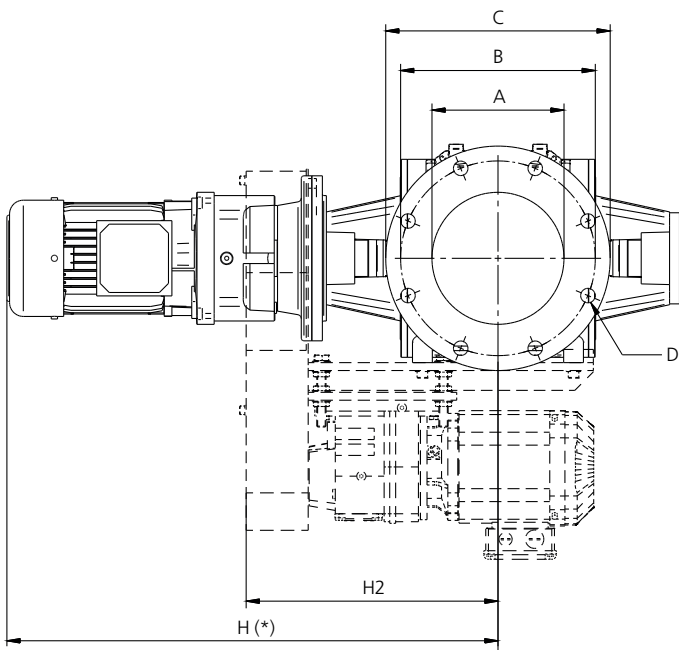


This valve is not available as flameproof version. Please note our RS, ExR, HT and HT-S rotary valves for flameproof versions.

## MEASUREMENTS, RPM AND WEIGHT

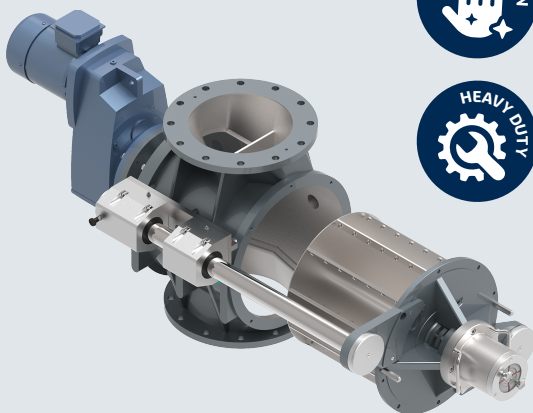
Type	Measurements (mm)										RPM	Gross weight (kg)**	
	øA	øB	øC	øD	F	F2	H (*)	H2	I (*)	L (*)		direct transmission	chain transmission
UPR200	200	295	340	8x Ø22	400	185	744	388	479	473	max 32	150	165
UPR250	250	350	405	12x Ø22	500	225	798	416	550	513	max 32	240	240
UPR300	300	400	445	12x Ø22	635	285	878	460	660	589	max 32	380	400

\* depending on drive



More information on our other valves can be found in our **catalogue Rotary valves**

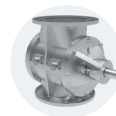
### NEW: QUICK-DISASSEMBLY EASY CLEAN VERSION



Available in Easy Clean version with extraction bars for cleaning the internal parts.



### OPTIONS AND ACCESSORIES



Housing treatments



Rotor treatments



Air purge



Revolution control



Injector

#### Others:

- Nickel plating
- Teflon coating
- Tungsten carbides coating
- Rotor polishing (SS only)