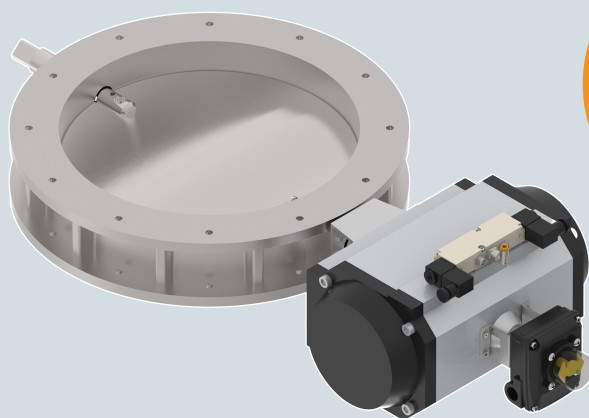


**Available in
pneumatic
and manual
version**



VPF BUTTERFLY VALVES



The VPF butterfly-valve is mainly used as a shut-off valve in food related industries. It can be used in gravity- and as well in low and middle pressure pneumatic conveying lines (max. 1.5 bar). In standard version the casing is made out of casted aluminum, with a built-in Adiprene seal or a non-toxic white rubber seal. The valve blade is made in stainless steel. VPF can be fitted with pneumatic actuator as well as manual operation. Suited for use in overpressure systems. Connection with flanges.

CHARACTERISTICS

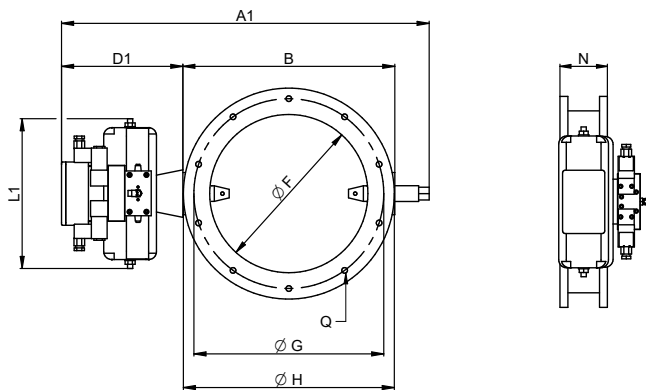
- Standard in aluminium with stainless steel pins and disc
- Optional: fully in SS 316
- Wide diameter range
- SS 316 valve blade in standard version
- Product temperatures: -15 °C and +60 °C
- Optional: heat resistant model with silicone seal (max. 180 °C)
- Manual or pneumatic operation possible
- Suited for overpressure use up to 1.5 bar
- Atex: only solenoid valve available in ATEX version. Overall butterfly valve is not ATEX certified.

TECHNICAL INFORMATION

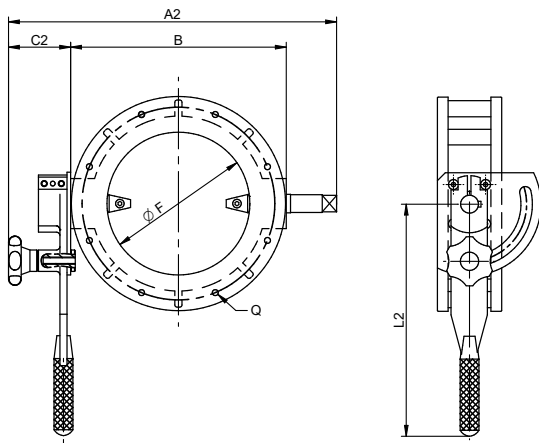
Type	100	120	150	200	250	300	350	400
Max. overpressure	1 bar							
Temperature range (inside)	-15 °C up to 60 °C							

SIZES AND WEIGHTS

Type	Sizes (mm)														WEIGHT (KG)	
	A1	A2	B	C1	C2	D1	ØF	ØG	ØH	L1	L2	N	Q	Holes	Aluminium	Stainless steel
VPF100	503	314	169	53	82	282	102	140	166	217	325	85	M10	6	3	5
VPF120	528	340	194	52	82	282	120	165	192	217	325	85	M10	6	4	6
VPF150	607	393	242	57	82	308	150	195	240	230	325	85	M10	6	4.5	7
VPF200	667	448	302	57	82	308	200	270	300	230	325	90	M10	8	6.5	10
VPF250	722	519	352	62	82	308	250	310	350	230	325	90	M12	8	8	12
VPF300	772	569	402	62	82	308	300	360	400	230	325	90	M12	10	10	14
VPF400	966	--	526	85	--	355	392	470	520	246	--	100	M12	12	18	24



Pneumatic operation

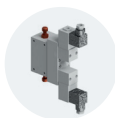


Manual operation

OPTIONS AND ACCESSORIES



Limit switch



Solenoid valve ATEX

More information
on butterfly valves
can be found in our
catalogue
Rotary valves